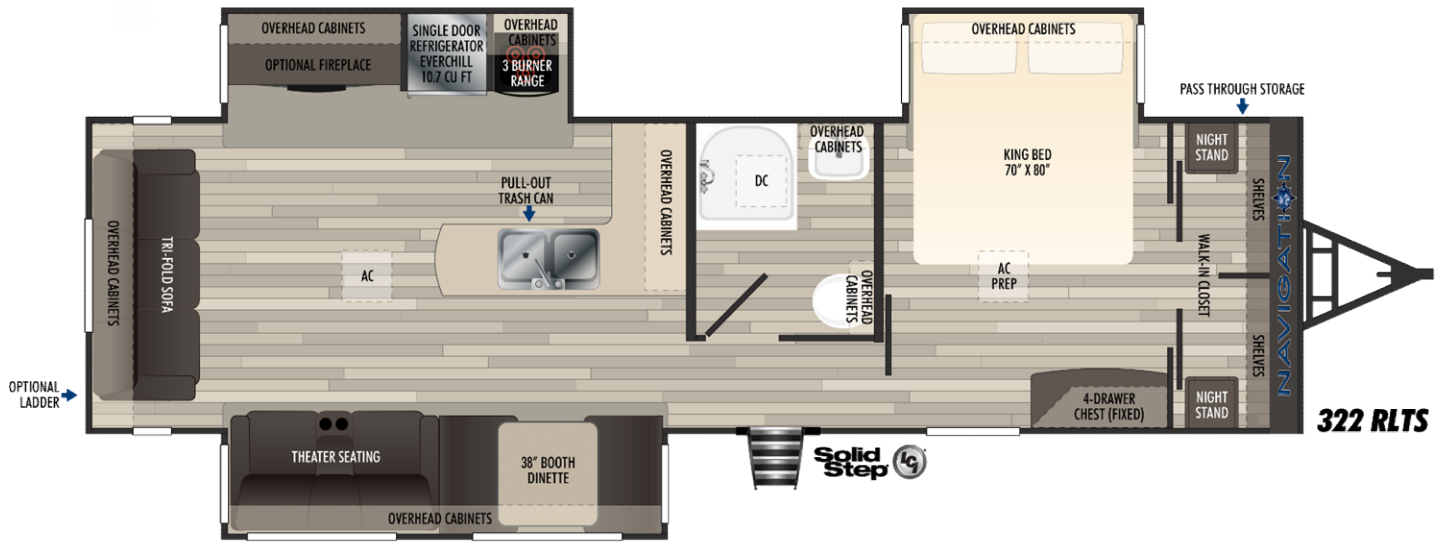


NAVIGATION



Exterior Features

Widebody 8.5'

- 2" X 4" Transverse Floor Joists 16" on Center
- 5/8" Tongue & Groove Plywood Flooring**
- 2" x 2" Sidewall Construction 16" on Center
- .030 Aluminum Mesa Exterior Siding
- 5" Engineered Roof Truss 16" on Center
- 3/8" Roof Decking W/EPDM Membrane Over Rafters
- Pass-Thru Front Storage
- 32" Friction Hinge Main Entry Door**
- 32" Lippert Solid Drop Down Step
- 50 AMP Service W/Detachable 25' Power Cord**
- Folding Entry Handle
- Power Tongue Jack

Interior Features

84" Interior Height

- Residential Tri-Fold Sofa
- 38" Booth Dinette w/Bench Storage
- DVD Stereo Sound Bar**
- 10.7 CU FT 12v Refrigerator
- Kitchen Pull-out Trash Can**
- Walk-in Pantry
- Residential King Bed 70x80 W/Storage**
- Porcelain Foot Flush Toilet**
- 1 pc. Fiberglass Shower**
- 15,000 BTU Ducted AC
- 2nd AC Prep
- 40,000 BTU Floor Ducted Furnace**

Exterior Options

- 2 Pair Electric Stabilizer Jacks IPO Crank Down Jacks
- Bumper Mount Spare Tire
- Rear Ladder
- Heated Holding Tanks

Interior Options

- Table W/4 Storage Chairs IPO Booth Dinette
- Extra Dinette Chair (Ea)
- LED Rope Light Package Kit & LR Per Floor Plan
- 30" Fireplace W/Remote
- 2nd 15,000 BTU A/C - Ducted
- Fantastic Fan W/Remote IPO Ceiling Vent Fan

Dry Wgt	Hitch Wgt	GVWR	Ext Length	Ext Height
10,026	1,300	12,000	36	12' 2"

Fresh	Gray	Black	Water Htr	Awning
49 Gal	49 Gal	49 Gal	10 Gal G/E	16'

AC (s)	Furnace	Bed	# slides	Axles
15,000 BTU	40,000 BTU	70 x 80	1	6,000 lbs.

Your Local Dealer: