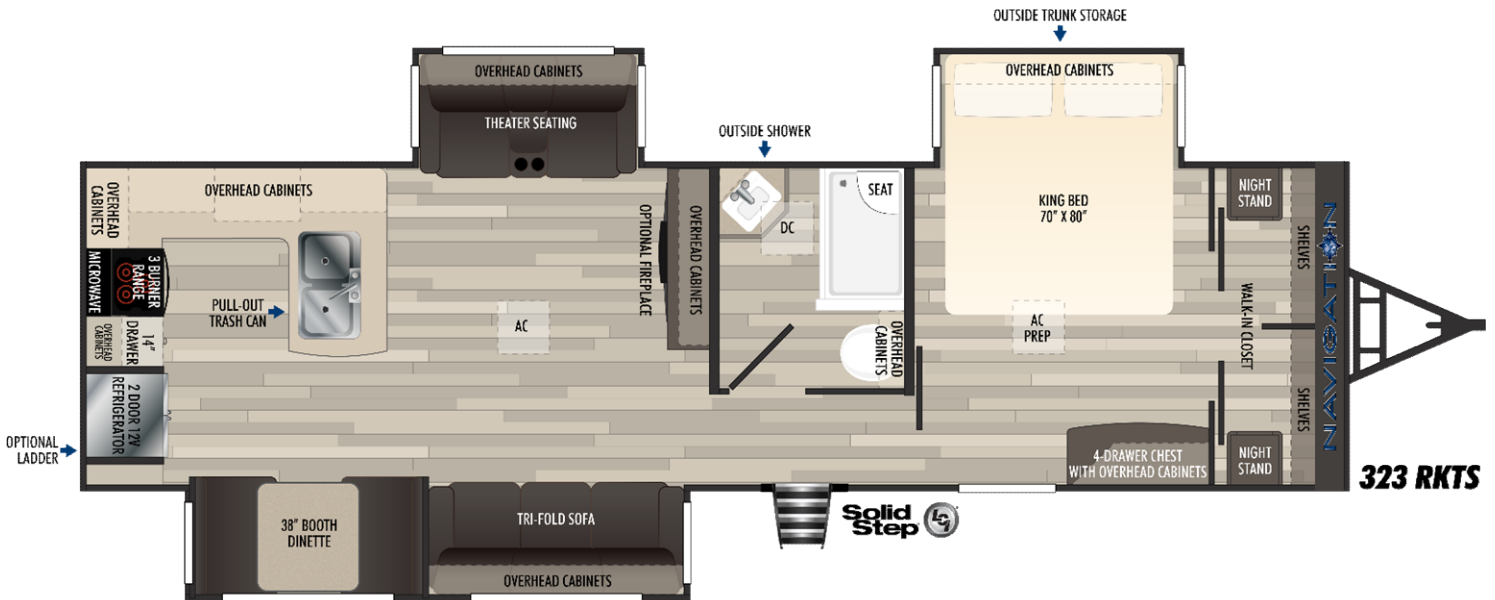


NAVIGATION



Exterior Features

Widebody 8.5'

2" X 4" Transverse Floor Joists 16" on Center

5/8" Tongue & Groove Plywood Flooring

2" x 2" Sidewall Construction 16" on Center

.030 Aluminum Mesa Exterior Siding

5" Engineered Roof Truss 16" on Center

3/8" Roof Decking W/EPDM Membrane Over Rafters

Pass-Thru Front Storage

32" Friction Hinge Main Entry Door

32" Lippert Solid Drop Down Step

50 AMP Service W/Detachable 25' Power Cord

Folding Entry Handle

Power Tongue Jack

Interior Features

84" Interior Height

Residential Tri-Fold Sofa

38" Booth Dinette w/Bench Storage

DVD Stereo Sound Bar

10.7 CU FT 12v Refrigerator

Kitchen Pull-out Trash Can

Walk-in Pantry

Residential King Bed 70x80 W/Storage

Porcelain Foot Flush Toilet

1 pc. Fiberglass Shower

15,000 BTU Ducted AC

2nd AC Prep

40,000 BTU Floor Ducted Furnace

Exterior Options

2 Pair Electric Stabilizer Jacks IPO Crank Down Jacks

Bumper Mount Spare Tire

Rear Ladder

Heated Holding Tanks

Interior Options

Table W/4 Storage Chairs IPO Booth Dinette

Extra Dinette Chair (Ea)

LED Rope Light Package Kit & LR Per Floor Plan

30" Fireplace W/Remote

2nd 15,000 BTU A/C - Ducted

Fantastic Fan W/Remote IPO Ceiling Vent Fan

| Dry Wgt | Hitch Wgt | GVWR | Ext Length | Ext Height |
|---------|-----------|--------|------------|------------|
| 10,098 | 990 | 12,000 | 36 | 12' 2" |

| Fresh | Gray | Black | Water Htr | Awning |
|--------|--------|--------|------------|--------|
| 49 Gal | 49 Gal | 98 Gal | 10 Gal G/E | 19' |

| AC (s) | Furnace | Bed | # slides | Axles |
|------------|------------|---------|----------|------------|
| 15,000 BTU | 40,000 BTU | 70 x 80 | 1 | 6,000 lbs. |

Your Local Dealer: